



Ref: 5706 Can Fiol POLLENÇA

DESCRIPTION

Can Fiol is an imposing stone-built villa with modern interiors and superb outdoor areas. The private swimming pool is set within extensive gardens with lawn offering excellent opportunities for outdoor living and dining (including a fantastic poolside kitchen area). Great location close to Puerto Pollensa! Three steps lead up to the entrance terrace (there is also a ramp up). Double wooden doors lead into a large hallway. There is a marble finish throughout the ground floor and staircase. The kitchen suite comprises of a walk-in utility room and large kitchen diner. The kitchen has doors to two sides of the room which lead out to the surrounding terraces. The breakfast area has an aluminium and glass topped table with brightly coloured orange chairs. From the hallway a large dining room/lounge with two sets of glass double doors lead out onto the rear terrace. Going out of the lounge through sliding glass double doors and back into the hallway, there is a guest toilet and a twin bedroom which has double doors leading out into the garden. Off of this bedroom is an en suite walk in shower room. Back into the hallway a staircase leads up the first floor. On the left is a further twin bedroom with an en suite shower room. Double doors lead out on to a shared terrace. The master bedroom has a 2m bed. Double glass sliding doors lead out to the shared terrace. An en suite full bathroom with separate walk in shower completes this master room. From the upstairs terrace are commanding views of the mountains and countryside surrounding the property. The rear terracing follows the full length of the villa and has rattan sofa, chairs and occasional tables for relaxing. From this terrace a path lead across to the poolside shower and purpose built covered BBQ. The gardens are set to grass and shrubs with the pool surrounded



Comfortvilla - Villaexpert B.V.
Van der Zaenlaan 44
1215 SJ Hilversum
The Netherlands

www.comfortvilla.com
info@comfortvilla.com
Tel. +31 85 877 24 12

by small trees. Lighting is set around the gardens and pool area. SWIMMING POOL: W 12m x 6m (D 0.6m -1.8m) Salt water pool with Roman steps. Setup Surface: 300m², grounds: 4000m². Ground floor: Entrance, guest toilet, dining area / lounge, kitchen, utility room, twin bedroom, bathroom with shower. First floor: Twin bedroom with bathroom en-suite, master bedroom with walk-in closet and bathroom en-suite. Interior Air conditioning, Wifi internet, DVD, HIFI, TV with satellite, dishwasher, washing machine, fridge / freezer, microwave, iron + board. Exterior SWIMMING POOL: W12m x 6m (D 0.6m -1.8m) Salt water pool with Roman steps. Electric gate, parking, garden with lawn, covered terrace with barbecue, fridge and sink, sun beds, dining table, breakfast table. Situation Between Puerto Pollenca and Alcudia - Mallorca (north) - Balearic Islands - Spain Distances Beach 4.4km / Pollençà 4.2km / Port Pollençà 4.5km / Cala St Vicente 7.2km / Alcudia 8.6km / Golf 8.1km / Supermarket 5.2km / Restaurant 4.4km ETV-1217 Views Garden, fields, hills. Comments Bed linen and bath towels are included. First baby bed and first high chair included. As a general rule you receive cleaning twice a week. Linen is changed weekly for two week stays. Additional costs: reservation costs €20, local Ecotax.Heating, using the air conditioning system on a warm setting, is included in the price for holidays between 29th March - 1st November. This is on a timer and is available for use between 14:00-16:00hours and 20:00-08:00 hours.License number: ETV-1217



Comfortvilla - Villa Expert B.V.
KvK: 32140817 BTW: 819971509B01 IBAN: NL09 RABO 0372 2421 46 (BIC code: RABONL2U)



General

Type of Property: **Detached** m2: **491**
house / Villa
m2 plot: **14316** Distance from the beach:
Year of construction: Type of pool: **Private**
Views: **View to the slopes**

Characteristics

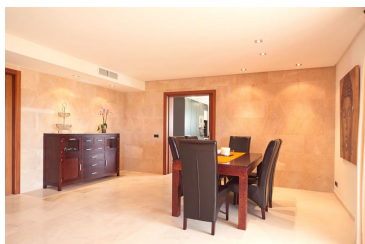
Number of rooms: **3** Toilets: **1** Bathrooms with bathtub: **1**
Bathrooms with shower: **3** Double beds: **1** Single beds: **4**
Bunk beds: **0** Cribs: **0** Sofa beds: **0**
Type of kitchen:

Other Features

Balcony Terrace Garden
Parking

Equipment

typology_id Heating Air Conditioning
Kitchen equipment Dishwasher Oven
Microwave Coffee maker Refrigerator
Washing Machine Iron TV
DVD Internet Free Wifi
BBQ Garden furniture Garden and outdoor
furniture
Deckchair





Comfortvilla - Villaexpert B.V.
Van der Zaenlaan 44
1215 SJ Hilversum
The Netherlands

www.comfortvilla.com
info@comfortvilla.com
Tel. +31 85 877 24 12

Season	Price	Minimum stay
--------	-------	--------------



Comfortvilla - Villa Expert B.V.
KvK: 32140817 BTW: 819971509B01 IBAN: NL09 RABO 0372 2421 46 (BIC code: RABONL2U)



www.comfortvilla.com